



# DiscoverTrac

**Increasing Productivity in Pre-Clinical R&D**



Rick Gabrielli  
Chief Technology Officer, Co Founder  
[rgabrielli@biopointsolutions.com](mailto:rgabrielli@biopointsolutions.com)  
978-739-9218  
[www.biopointsolutions.com](http://www.biopointsolutions.com)

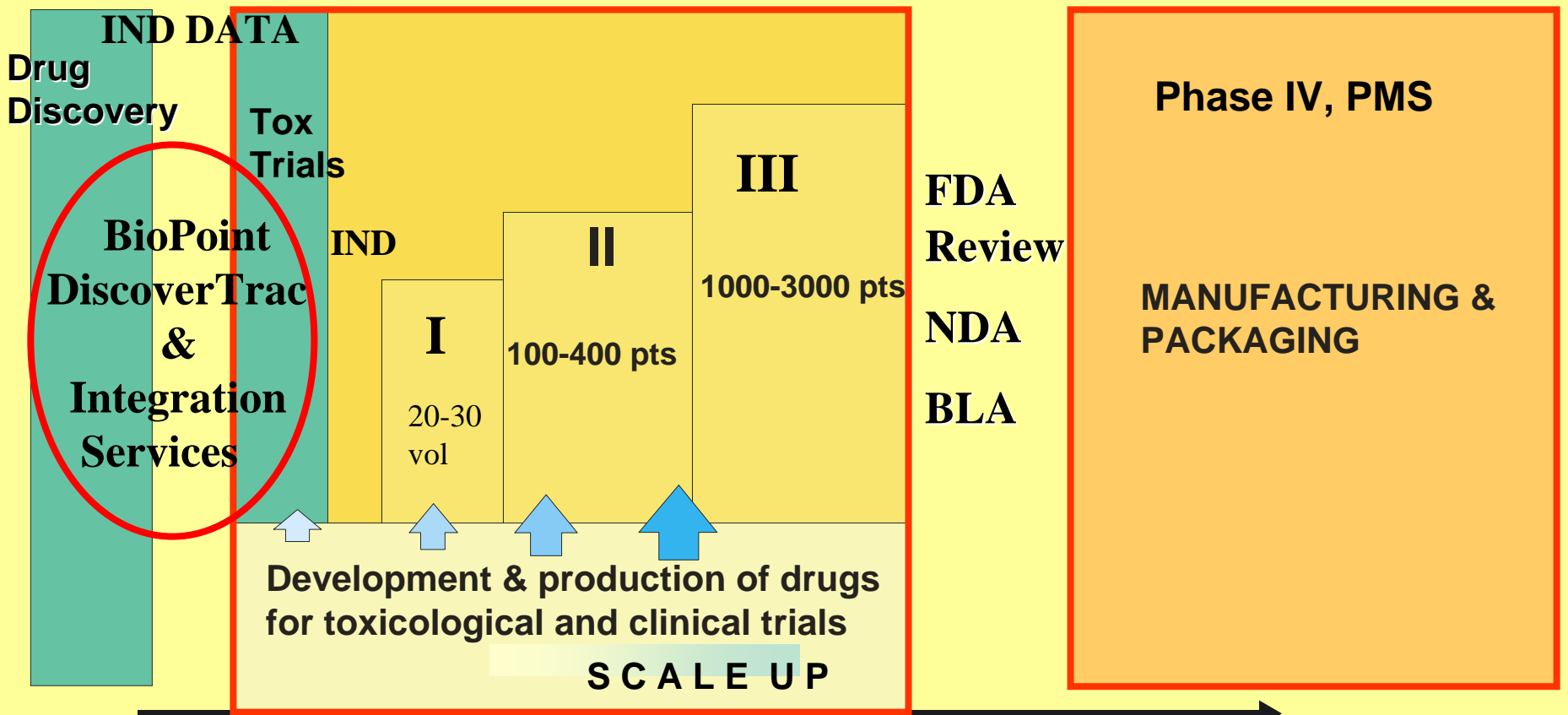


# BioPoint's Focus

PRE-CLINICAL

CLINICAL PHASES

PRODUCT LAUNCH/PRODUCTION



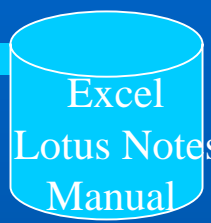
Phase Forward, Perceptive SAP, PeopleSoft, ERP, CRM

Biology & Modeling

Medicinal Chemistry

Pharmacology  
*In Vivo*

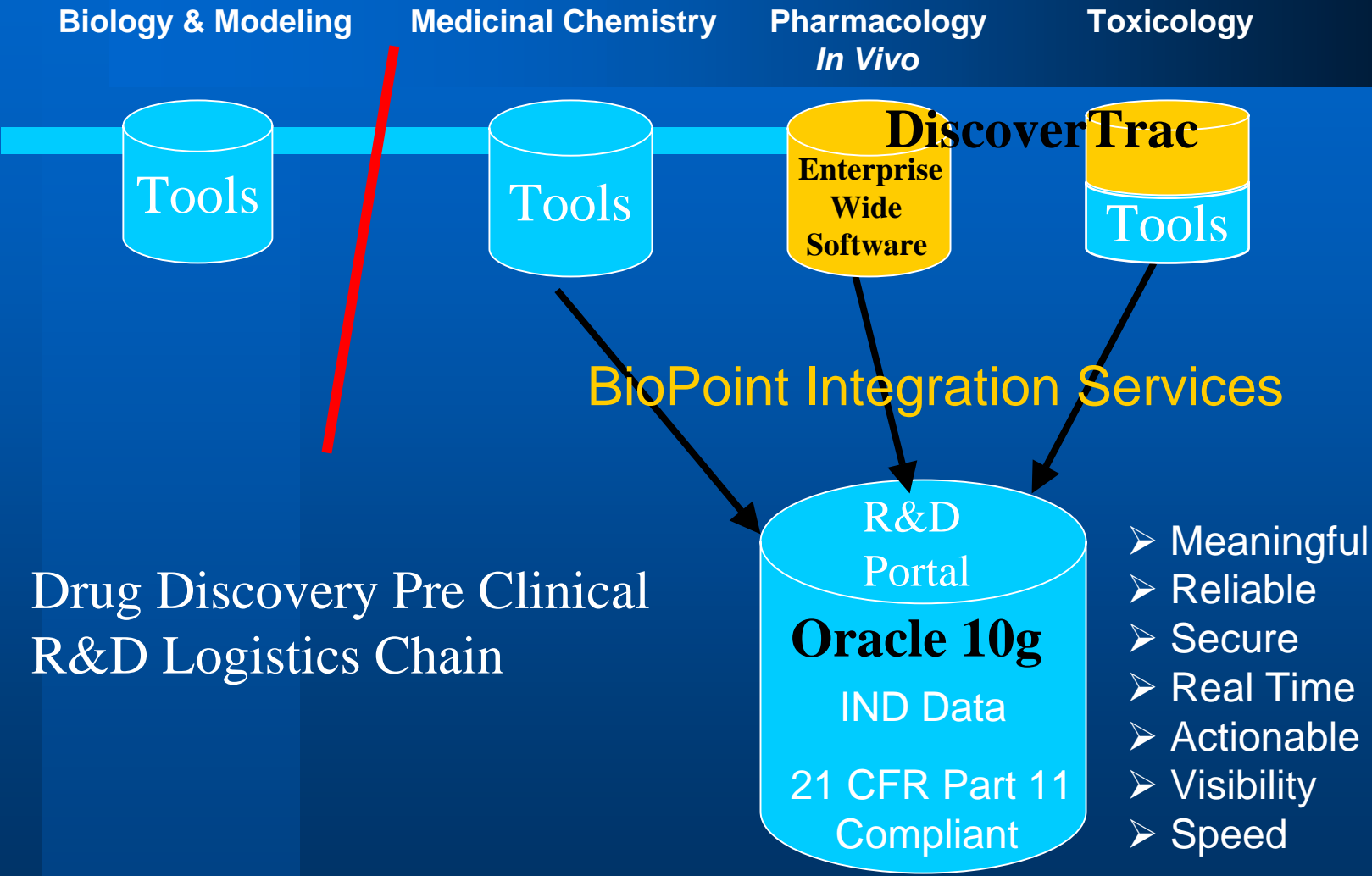
Toxicology



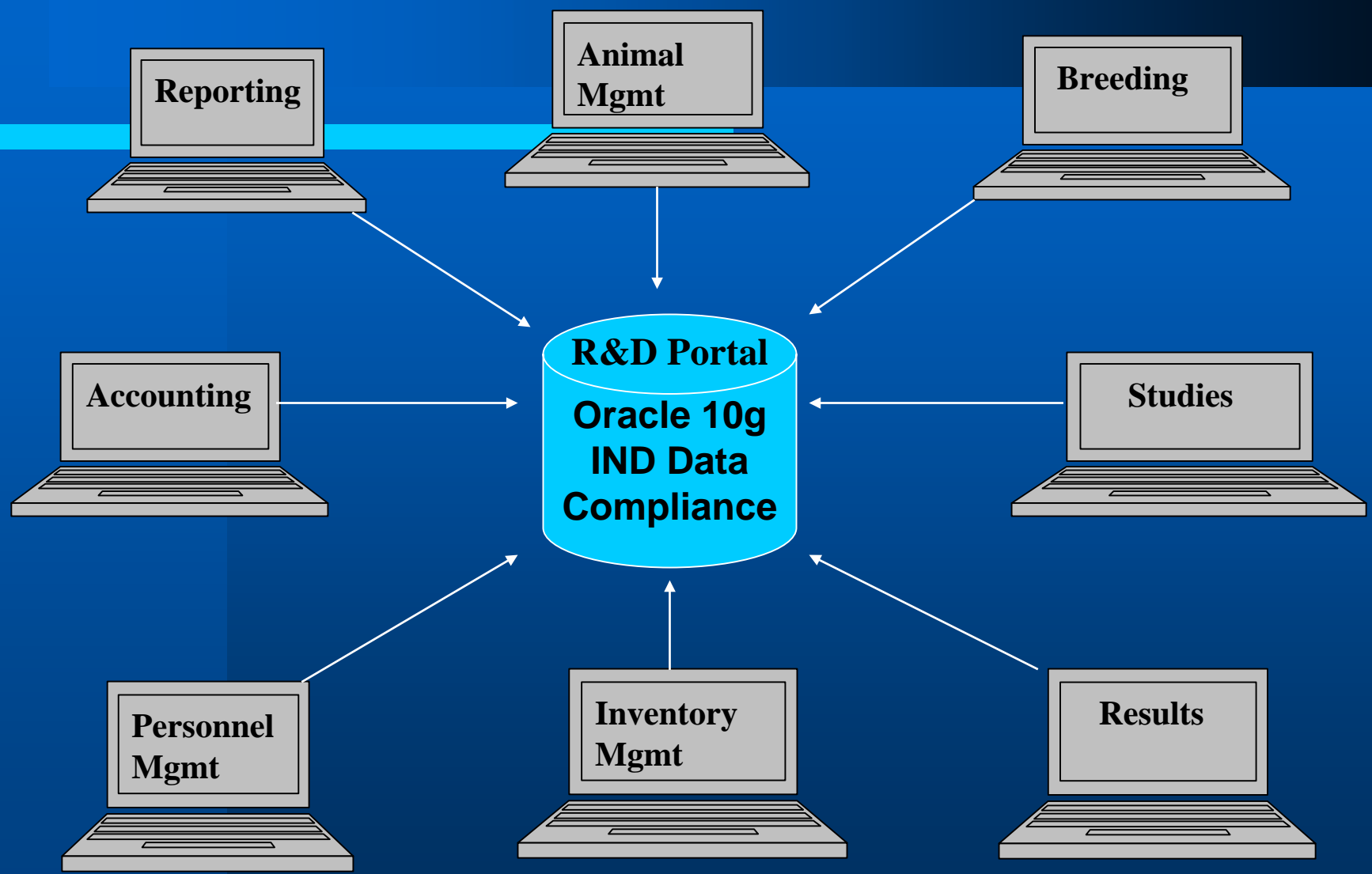
Must go to each silo of data and manually correlate and analyze

Drug Discovery Pre  
Clinical R&D  
Logistics Chain

- > For IND Data
- > For 21 CFR Part 11 reporting
- > For Decision Making
- > For Pipeline Management



Drug Discovery Pre Clinical  
R&D Logistics Chain



# Client Benefits

Meaningful, reliable, real time, secure data



- Increase productivity
  - Ease of use
  - Lab workflow processes
  - Full scheduling
  - Visibility to lab data
- Collaborate with;
  - One another
  - Labs in different locations
  - Research partners; CRO's
  - Academia
- Financial Management
  - Track cost and activities
  - R&D investment analysis
- Mitigate Risk
  - Data validation
  - FDA compliant
  - Scalable

# Current Architecture

- **Web Based User Interface**
- **Oracle Database**
- **Tools for Lab Equipment Data Collection**
- **Integration with CambridgeSoft Chemistry Products**
- **Integration with Document Management (SharePoint)**
- **Custom Report Writer Linked to MS Office (Excel, Word)**
- **ERD's Provided for use with SAS, Spotfire etc.**
- **Scalable Enterprise Platform**

# 10g Adoption Plans

- Oracle Business Intelligence Warehouse Builder for data extraction, transformation & loading
- Business Intelligence
  - Discoverer
  - Intelligence Spreadsheet
- Oracle Application Server Portal



**Evolve to Grid**

**Integrated scientific data, collaboration, multiple sites, high speed data mining**